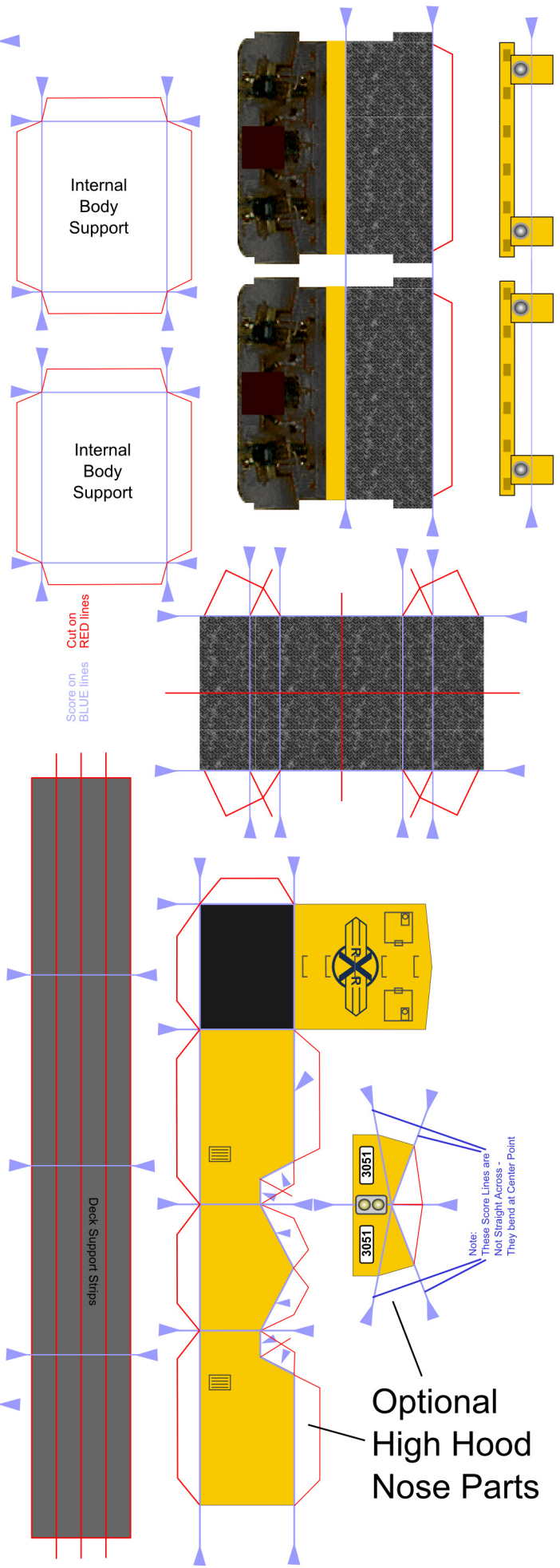




This material intended to be printed for personal use only.
 Sale or redistribution in any assembled form prohibited
 except where authorized by written consent.
 C600 Series Road Switcher
 © Copyright 2011 RXR Models RXRmodels.com



Assembly Instructions Available at
www.RXRModels.com

Optional
 High Hood
 Nose Parts

DO NOT FOLD — GLUE TAB AND ALIGN TO DASHES

This material intended to be printed for personal use only. Sale or redistribution in any unassembled form prohibited except where authorized by written consent.

C600 Series Road Switcher
© Copyright 2011 RXR Models RXRmodels.com

Fuel Tank Internal Support

Score on BLUE lines
Cut on RED lines



FOLD & GLUE THIS SIDE FIRST

Assembly Instructions Available at www.RXRModels.com

Mount Towards Coupler

Mount Towards Coupler

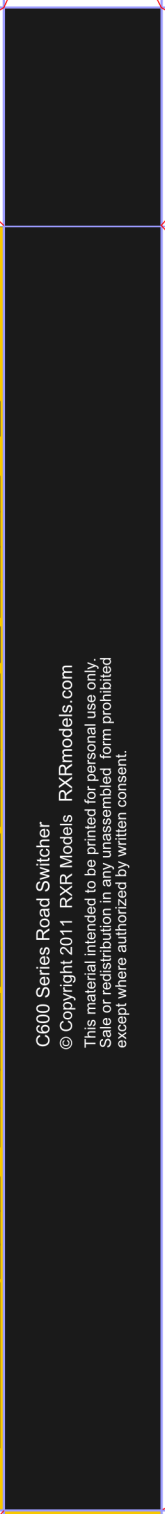
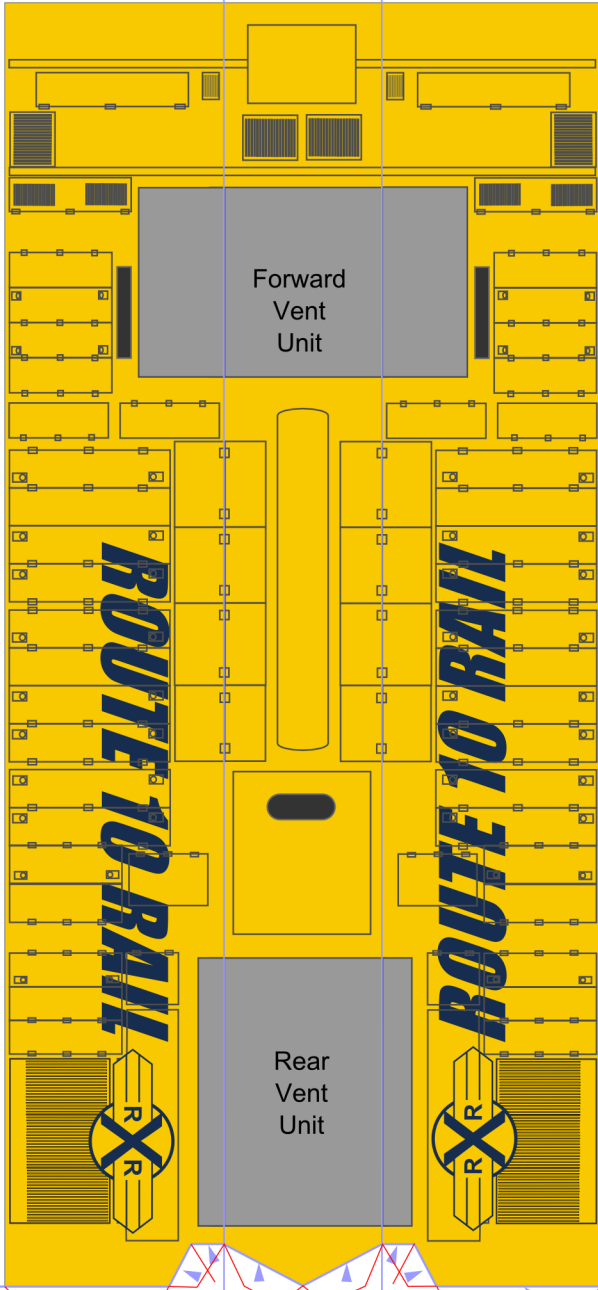
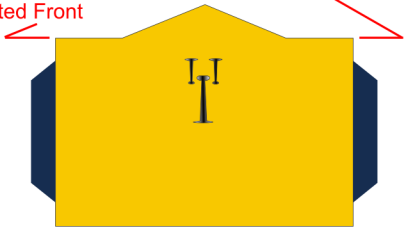
Cut and Remove RED Areas from Outer Trucks

Mount Towards Coupler

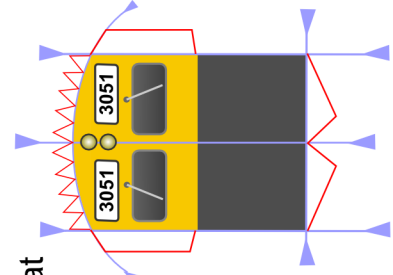
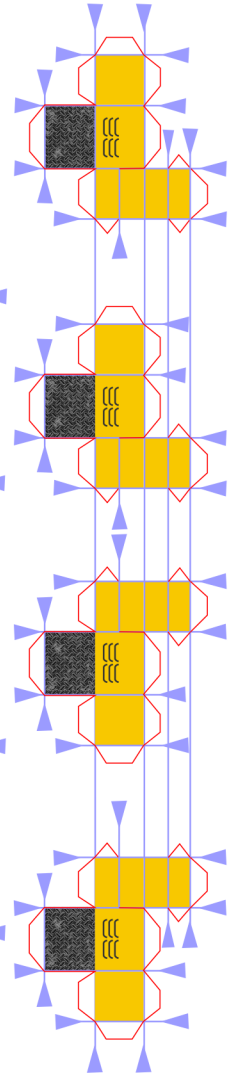
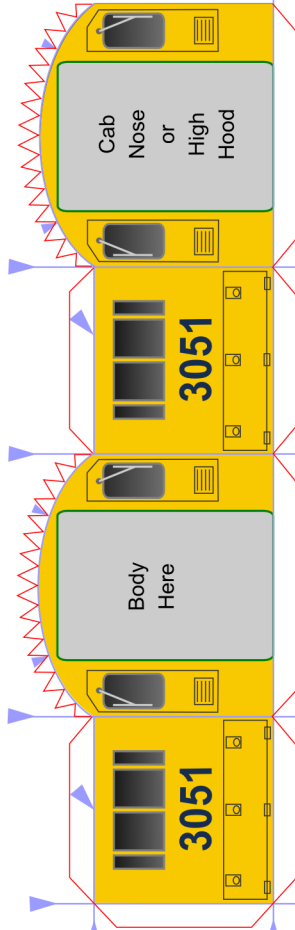
Mount Towards Coupler

Mount Towards Coupler

If Building High Hood Version, Cut Straight Across to Remove Pointed Front

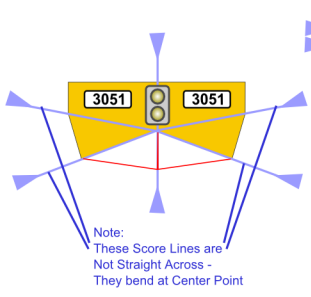
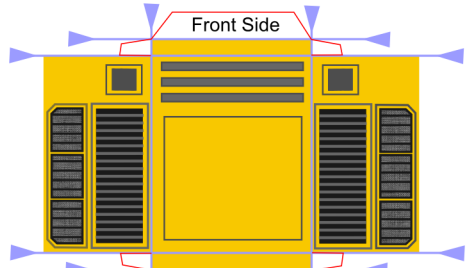


C600 Series Road Switcher
 © Copyright 2011 RXR Models RXRmodels.com
 This material intended to be printed for personal use only.
 Sale or redistribution in any unasssembled form prohibited
 except where authorized by written consent.



Cut on RED lines
 Score on BLUE lines

Assembly Instructions Available at
www.RXRModels.com



Note:
 These Score Lines are
 Not Straight Across -
 They bend at Center Point

