

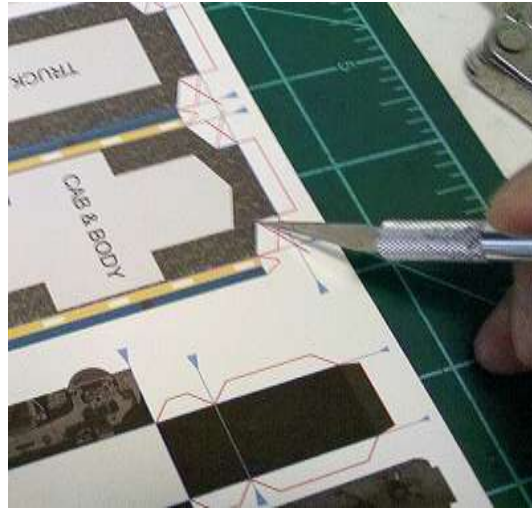
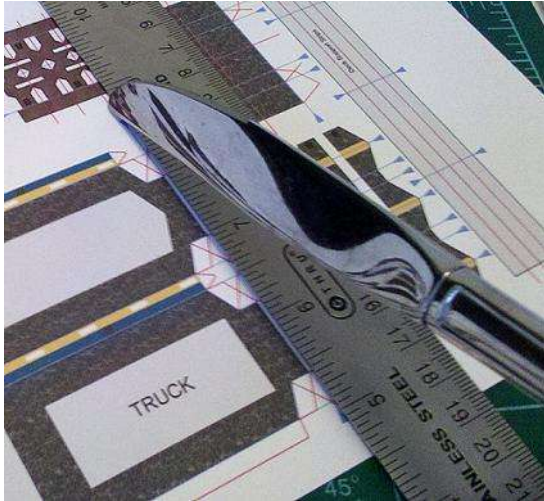
RXR Models – General Assembly Instructions for F & E Series Full Body Locomotives

(Parts and/or photos may vary depending on specific model)

DO NOT PRINT THESE INSTRUCTIONS ON CARD STOCK PAPER!

Print these pages on standard copy paper, then switch to card stock for the model parts only.

Print design pages on a good “Card Stock” or “Tag Board” type paper. The model can be done on conventional 20lb copier type paper of course, but thin paper will not hold shape very well and the assembled model will be very “wobbly”. A good heavy card type paper will be easier to construct, provide cleaner lines, and make a good sturdy model.



Score all Blue lines prior to cutting parts from sheet. This can be done with any blunt blade, like a dull butter knife, or other thin blade that will not cut the paper. Use a metal ruler, or metal-edged ruler to keep lines straight. Blue Guide Arrows are provided where possible, however, there are fold lines that arrows cannot be placed on, so look closely for those.

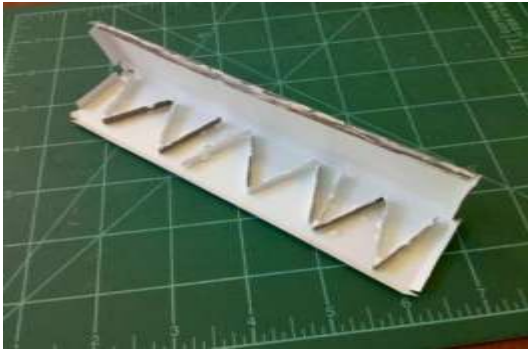
Cut out parts using a good sharp modeling knife. Cut all Red lines as they indicate additional cuts needed. *Caution/Disclaimer: Use of sharp modeling knives should not be allowed by children unsupervised!*



Before assembling (gluing) parts; always color all cut edges and fold lines to eliminate the white lines left by the uncolored paper. Avoid using dark permanent markers; instead use highlighter type markers for a more natural look. Use Gray for Black and dark areas, and try to match other colors where possible. This makes for a much more realistic model.

Assemble lower portion of unit as shown:

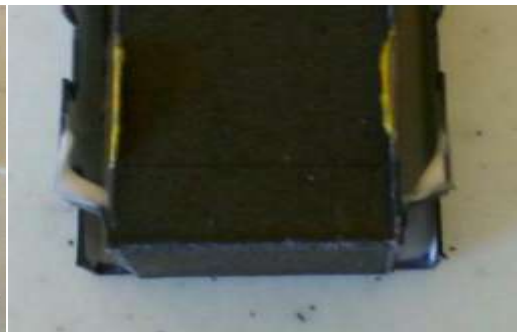
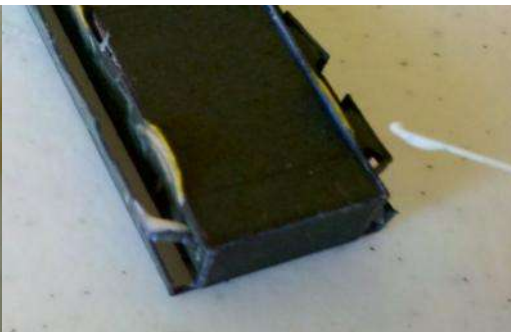
1.) Fold all score lines on the Deck before gluing any parts. Also fold score lines on the Deck Support strips and fold into a zigzag fashion. The support strips should be glued into the inside of the deck prior to folding the deck closed.



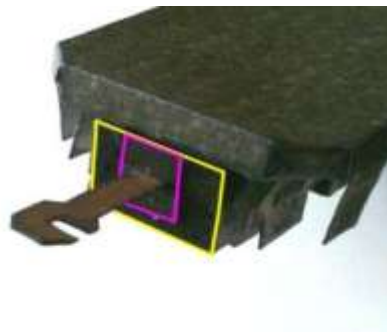
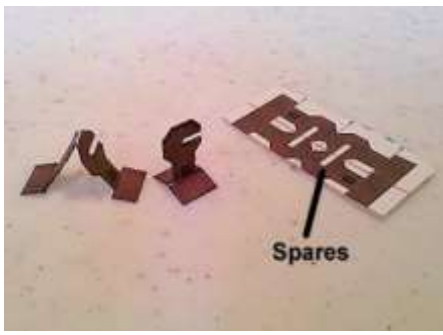
2.) Fold the Deck halves over to encase support strips. Apply glue to the strips on the top and bottom so they will bond the top and bottom surfaces of the deck to provide a rigid structure. Be sure to square up and align the sides before the glue sets. DO NOT glue the tabs on the ends of the deck just yet! Then immediately place assembly on a good hard flat surface and apply evenly distributed weight with a flat object to keep deck completely flat while glue dries. This is the foundation of the model! Allowing deck to dry without weighting down will allow the deck to twist or warp, and if that happens then the entire model will be warped! Once the deck glue has set, fold and glue the ends and corners. Note that the Nose End will have clipped corners. This is so the rounded nose of the "A" unit will fit better.



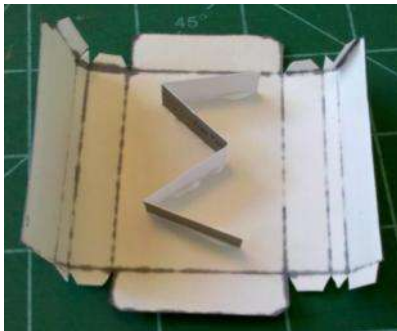
3.) While the Deck is drying, move on to the Truck Units. Again, score all fold lines before cutting. Darken edges and backs of the wheels with Gray highlighter. Truck units fold up into a "box" type structure. Assemble the 2 items and just be sure to keep sides and ends square. Then fold Truck outer assemblies and wrap over completed Trucks. Flush the outer covers with the Trucks on the ends, but center the Trucks with equal overhang on each side. This will give the trucks a realistic 3d/shadow effect.



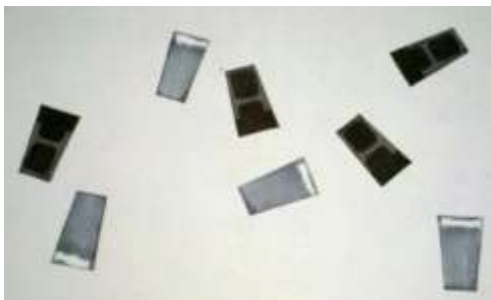
Note that on Triple Wheel Trucks, the outer assemblies have ties at each end instead of one tie in the center like Two Wheel Trucks do. Fold these in, and after gluing Trucks into place, glue tab ends to the trucks. Then using a toothpick or thin strip of paper, add a large dab of glue to the inner corners. This will dry clear and reinforce the corners, but will not be visible from above.



4.) Fold two couplers ("A" Unit needs 1 long coupler and 1 short coupler. "B" Unit needs 2 short couplers) to make a double-sided part with glue flap on top and bottom (bottom marked with "B"). Glue 1 coupler to the end of each truck unit. Align the top of the coupler attachment block to the top of the truck. REMEMBER- on the "A" Unit put the long coupler on the NOSE end. Keep the extra couplers. These are in case you need to replace one down the road. MAKE SURE YOU ALWAYS PUT THE BOTTOM (B) DOWN. If you always put the (B) down, then all of your models will always hook together properly.



5.) Assemble Belly Tank with zigzag support strips inside the same fashion as the deck was done.



6.) There are 8 step pieces which are just flat parts. Cut out, darken edges and backs of all of these with highlighter, and glue to the sides of the deck where indicated. Flush top of these parts to the top of the deck.

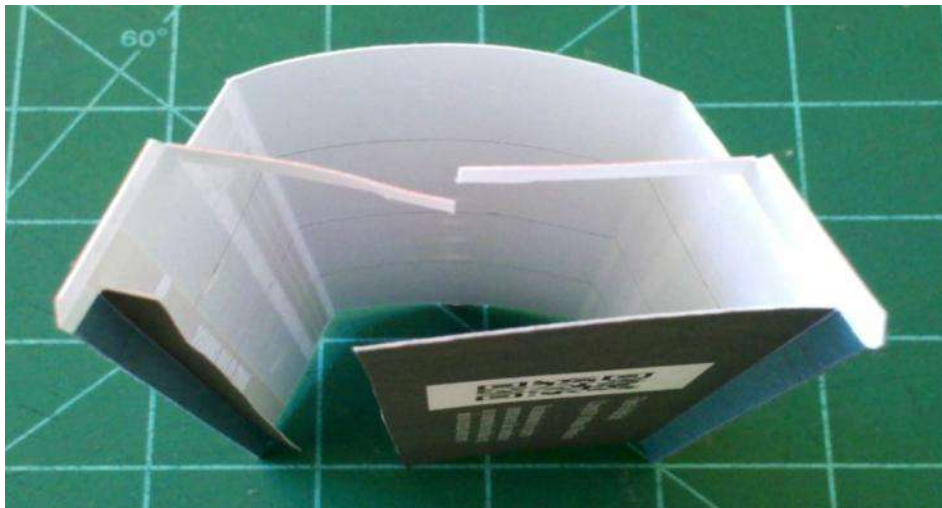


Attach Trucks and Fuel Tank to the bottom of the Deck Assembly; position as indicated on the deck. Note the tank has an end indicated to go towards the Nose End, so point that towards the end with the clipped corners.

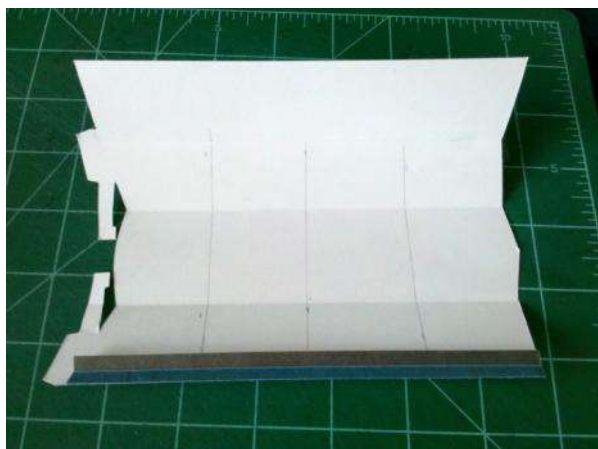
The lower portion is completed !!

Assembling the Upper portion.

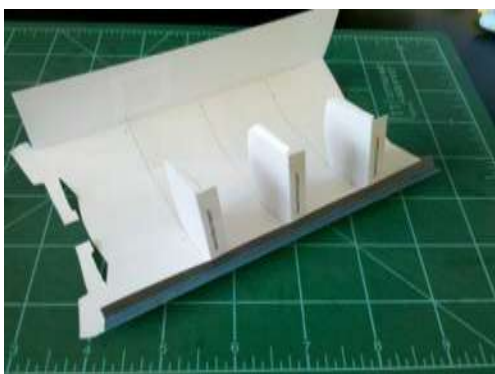
1.) After scoring all blue fold lines, carefully cut out the main body. Roll the roof section over table edge to give it a gentle arch shape as shown. Fold bottom edges and glue as shown. This will eventually form a recessed bottom to place over completed deck.

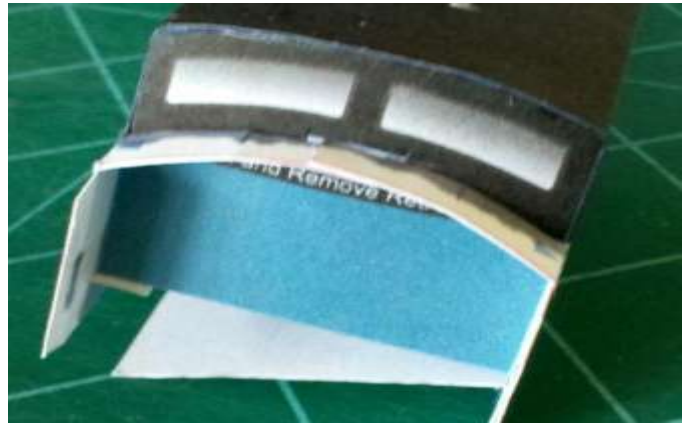
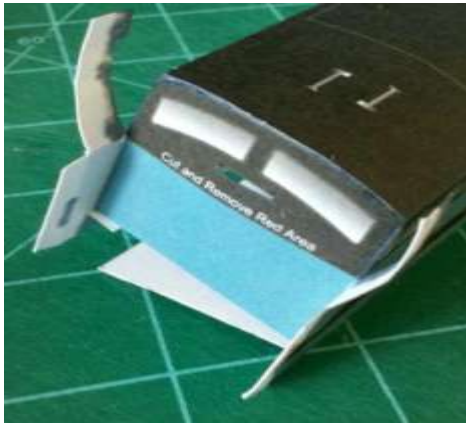


2.) Using a ruler and pencil – lightly draw 3 guidelines dividing body into approximately 4 equal sections. Also cut and prepare the 3 Internal Body Supports as shown below.



3.) Glue 3 Internal Supports to side with short thin bottom section. Use pencil lines as guides for placement and straightness. Only glue 1 side at first – let dry completely, then apply glue to top arches, and opposing sides of supports and wrap rest of body around them keeping in line with pencil lines as guides. **DO NOT GLUE BOTTOM YET!** Once roof and sides are aligned and squared up, set on flat surface and find something to apply light weight to roof to keep roof on top of arches until dry.

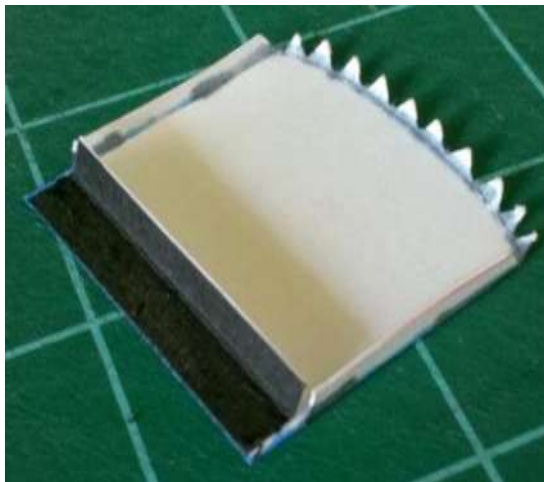




4.) Glue front windshield into body. This has multiple aspects to align. Top edge needs to follow bowed front of the roof, and piece needs to be angled backwards slightly so edges to left and right of windows follow slanted edges of the body. Once you have this part positioned properly and it has set, fold and glue nose support arms placing tabs into slot under window. Let arms bow naturally. Don't glue entire arm, let them "float" and just glue points at the tabs where they meet to the body at midpoint.



5.) Take Nose piece and roll gently on table edge to give it a bow form. Then glue Nose to one side of the body on the tab marked "No Fold" (Not folding tab will help keep rounded form of the nose as it bows around) make sure to align the top corner, follow the paint lines left-right and up-down). Once the one side has totally set, complete bowed nose by gluing to opposite side. Then complete Nose by adding top piece.



6.) Glue bottom of back panel back to form rear ledge as shown and then glue back panel into body flush to the end. Once this is in place, you can glue the entire bottom panel down to secure it.

7.) Take completed upper assembly and mate it to the completed lower assembly. Repeat entire process for the "B" Unit. Everything on the "B" Unit is the same; minus the complicated nose, and use 2 short couplers.



Enjoy!!



F Series Full Body Locomotives "A" & "B" Units

© Copyright 2011 – RXR Models – www.RXRmodels.com



This material and all Model Part Design Sheets are intended to be printed for personal use only. The sale or redistribution in any unassembled* form prohibited except where authorized by written consent.

*Redistribution of fully assembled (completed) models is permitted provided design, copyright, website, and disclaimer found on underside of model are not removed or altered.